

ECKINGTON YARDS WEST | PERSPECTIVE @ ECKINGTON PLACE, NE

A2.01 | PRE-HEARING SUBMISSION  
02 / 05 / 2016

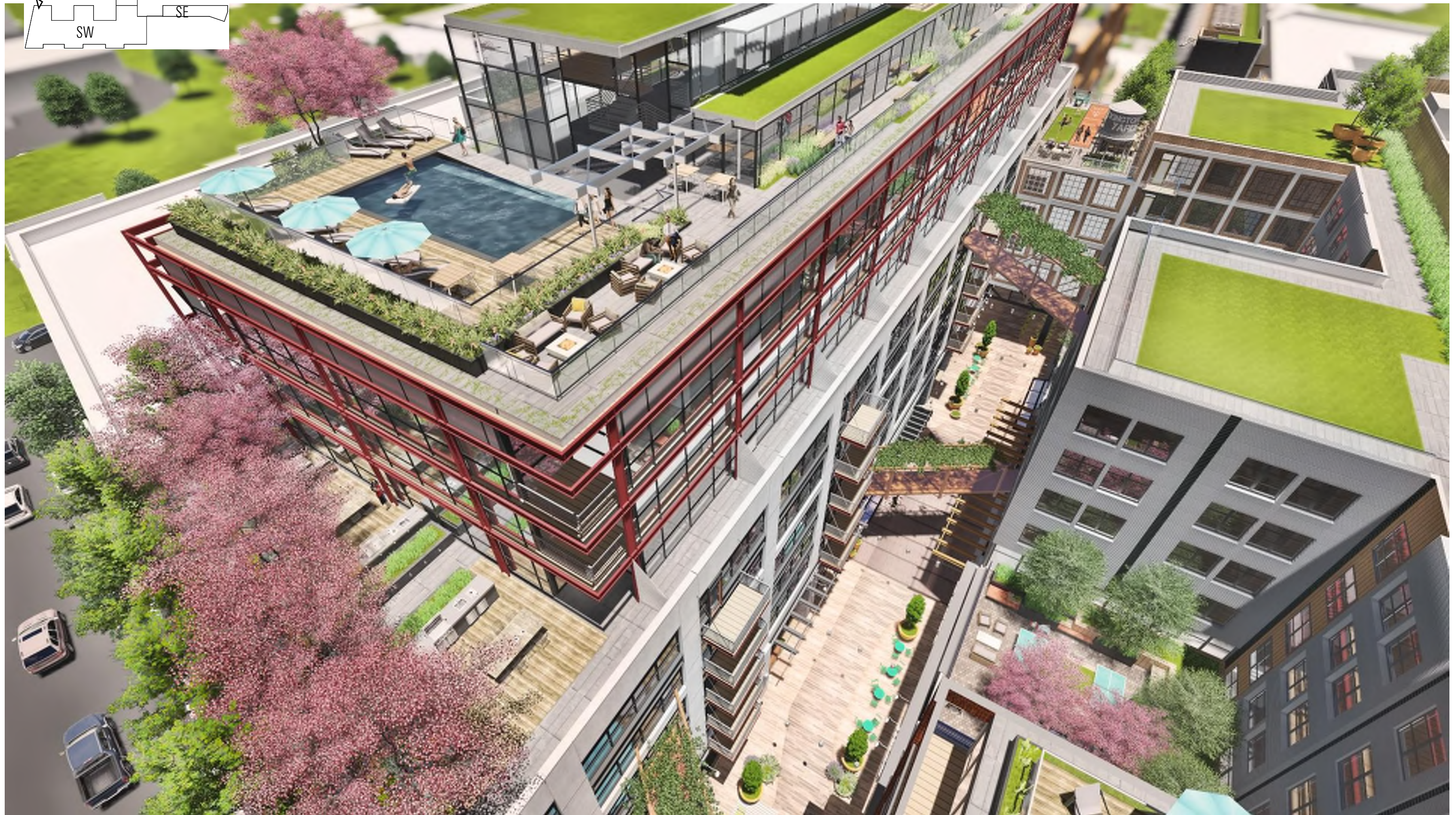
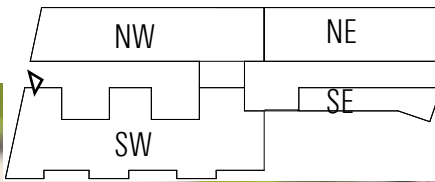
ECKINGTON YARDS | EAST + WEST  
1611-1625 ECKINGTON PLACE + 1500 HARRY THOMAS WAY, NE WASHINGTON DC 20002

BOUNDARY COMPANIES + J B G  
4445 WILLARD AVENUE, SUITE 400 BETHESDA MD 20815

ERIC COLBERT & ASSOCIATES, P.C.  
717 5TH STREET, NW WASHINGTON, DC 20001



ECKINGTON YARDS WEST | AERIAL VIEW @ ECKINGTON PLACE, NE



# ECKINGTON YARDS WEST | AERIAL VIEW

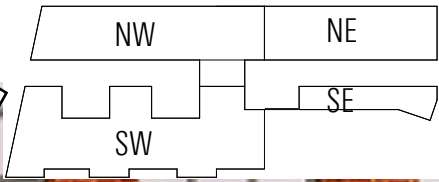
A2.03 | PRE-HEARING SUBMISSION  
02 / 05 / 2016

ECKINGTON YARDS | EAST + WEST  
1611-1625 ECKINGTON PLACE + 1500 HARRY THOMAS WAY, NE WASHINGTON DC 20002

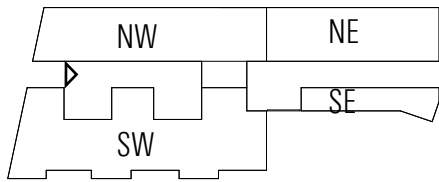
BOUNDARY COMPANIES + J B G  
4445 WILLARD AVENUE, SUITE 400 BETHESDA MD 20815

LANDDESIGN, INC.  
200 S. PEYTON STREET ALEXANDRIA, VA 22314

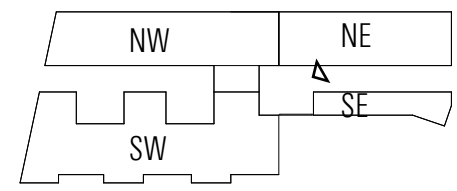
ERIC COLBERT & ASSOCIATES, P.C.  
717 5TH STREET. NW WASHINGTON, DC 20001



ECKINGTON YARDS WEST | STREET VIEW @ ECKINGTON PLACE, NE

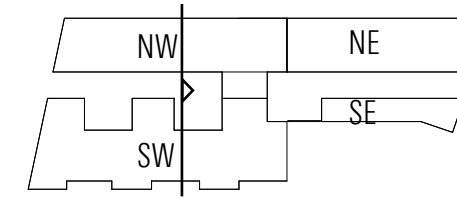


ECKINGTON YARDS WEST | PERSPECTIVE @ RETAIL PROMENADE

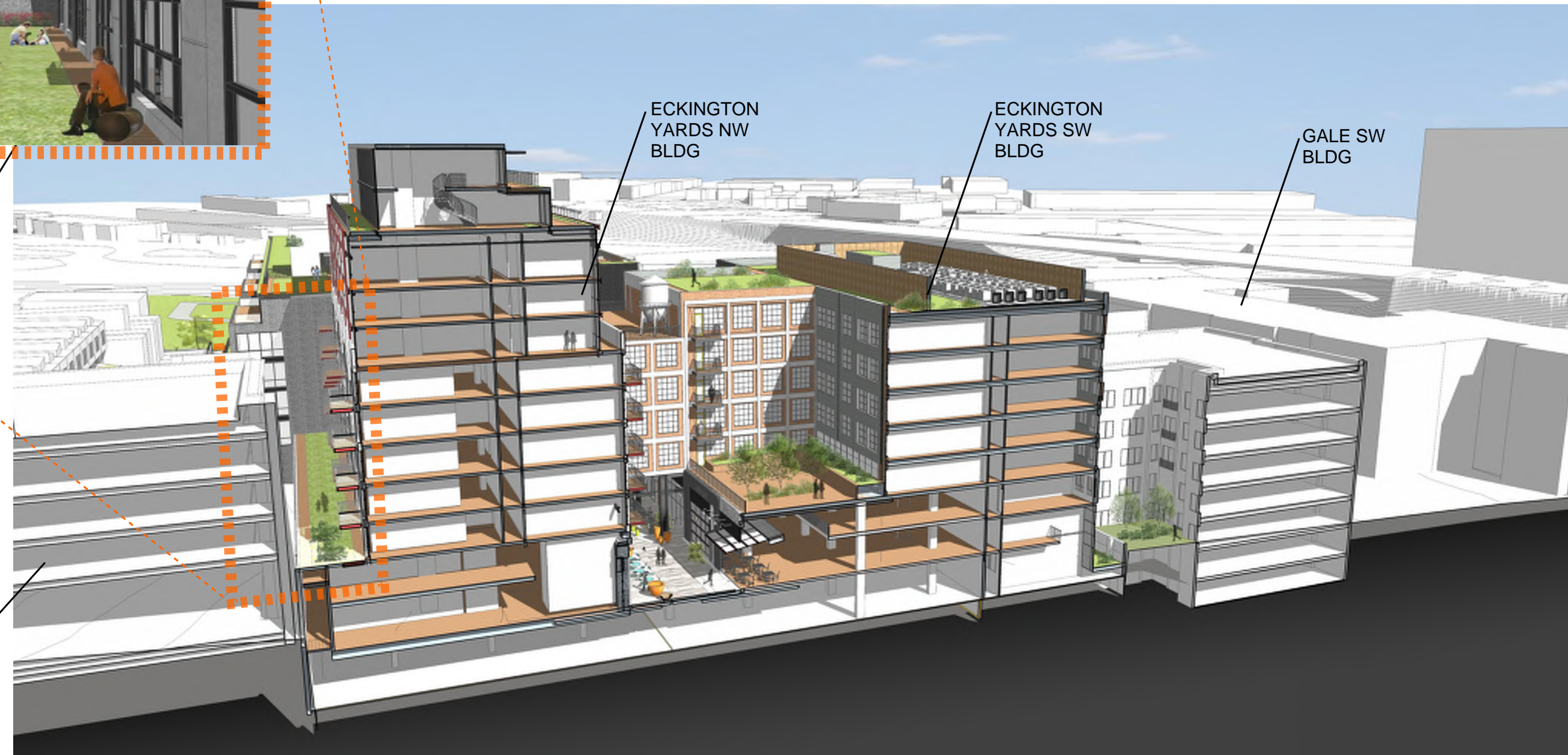


ECKINGTON YARDS WEST | VIEW OF PLAZA





SETBACK COURT BETWEEN STORAGE AND NW BLDG.



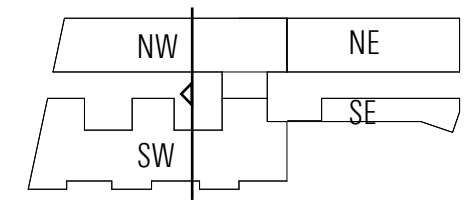
ECKINGTON YARDS NW BLDG

ECKINGTON YARDS SW BLDG

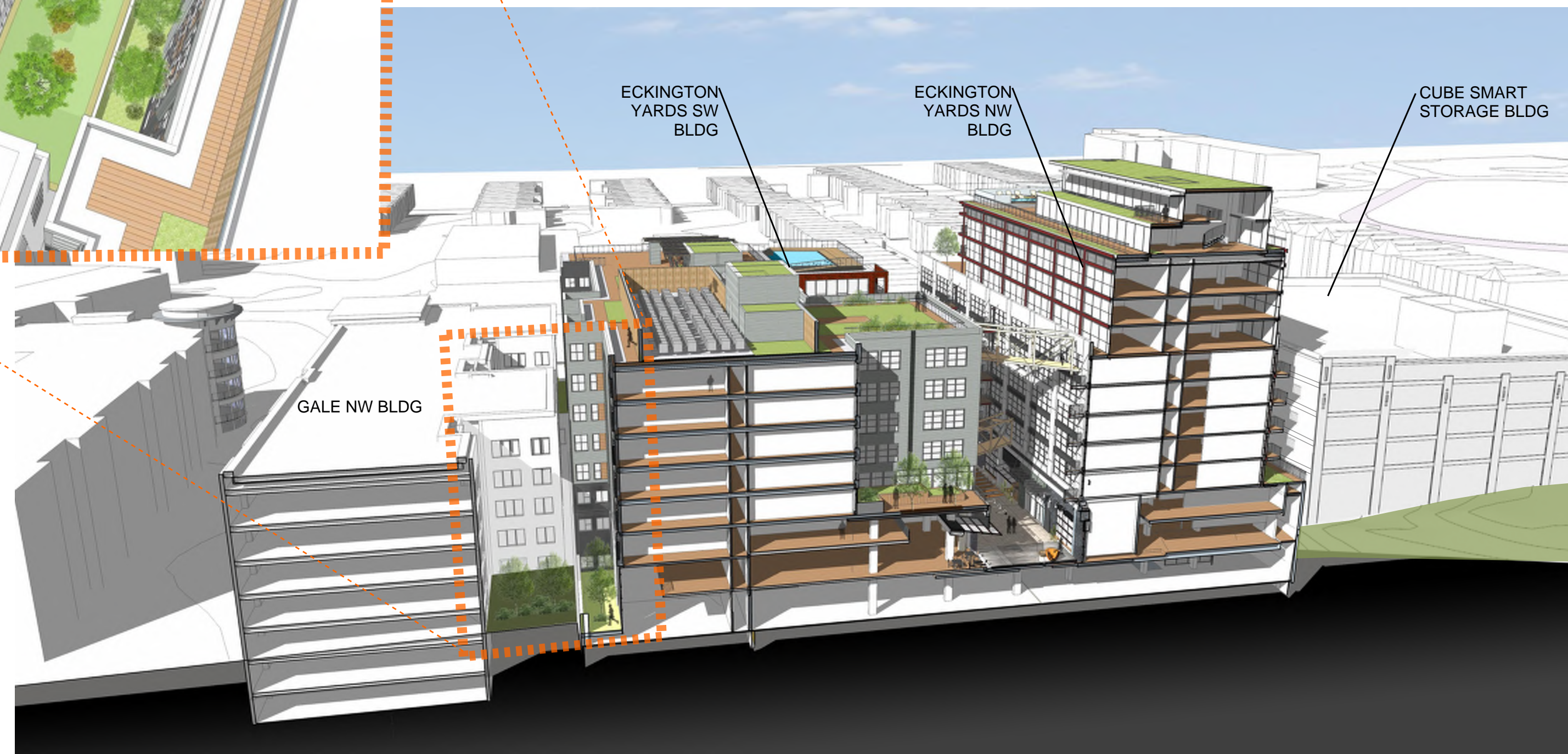
GALE SW BLDG

CUBE SMART STORAGE BLDG

ECKINGTON YARDS WEST | MASSING VIEWS @ NEIGHBORING BUILDING (CUBE SMART WAREHOUSE)



COURTYARD  
BETWEEN GALE  
AND ECKINGTON  
YARDS SW BLDG.



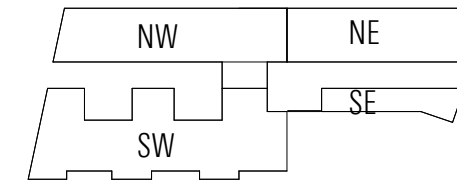
ECKINGTON  
YARDS SW  
BLDG

ECKINGTON  
YARDS NW  
BLDG

CUBE SMART  
STORAGE  
BLDG

GALE NW BLDG

ECKINGTON YARDS WEST | MASSING VIEWS @ NEIGHBORING BUILDING (GALE APARTMENTS)



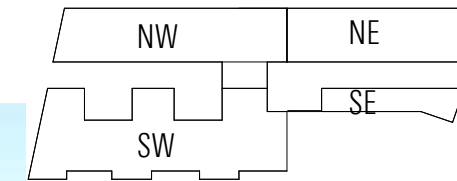
ECKINGTON YARDS WEST | PERSPECTIVE @ HARRY THOMAS WAY, NE

A2.09 | PRE-HEARING SUBMISSION  
02 / 05 / 2016

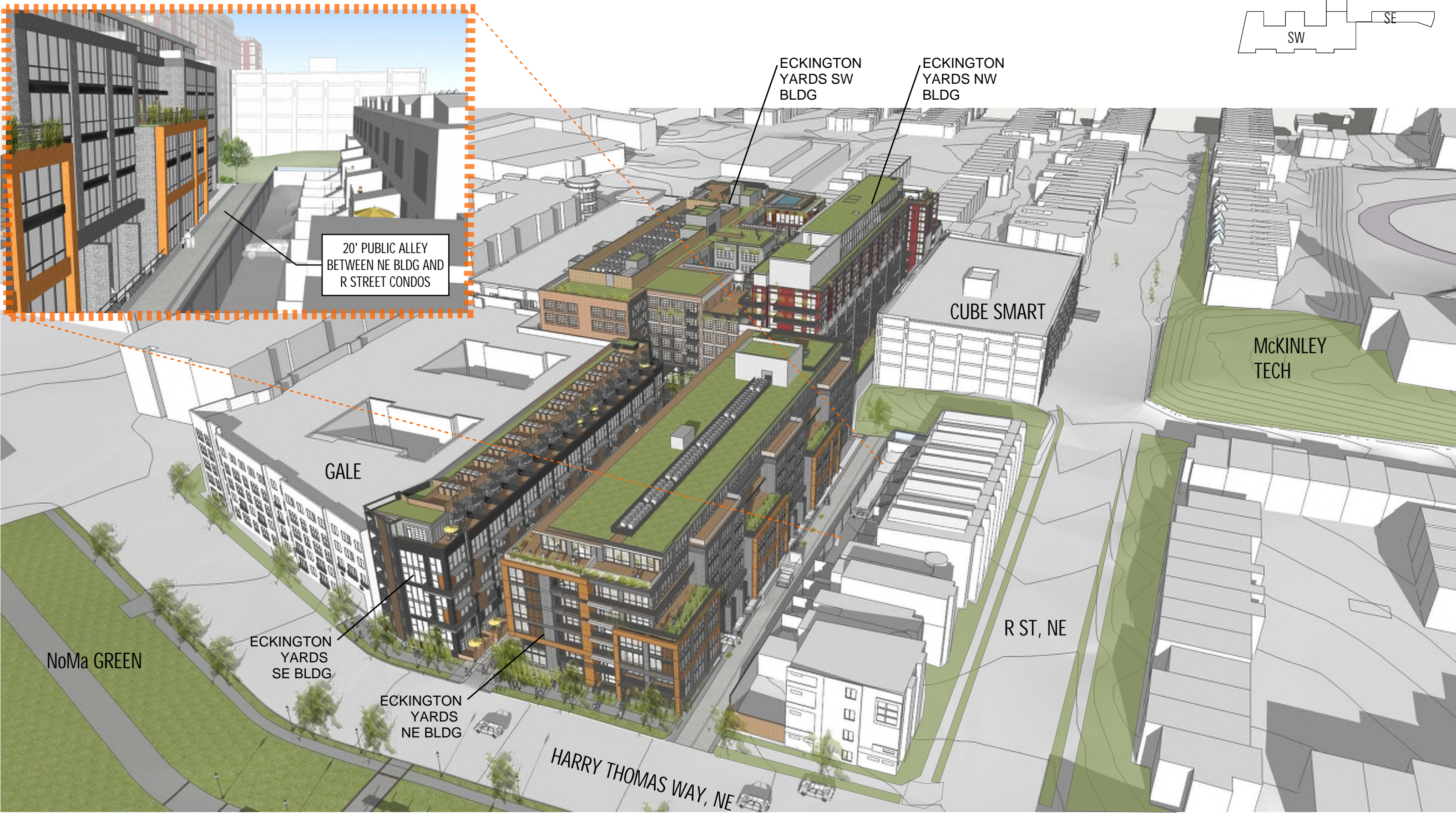
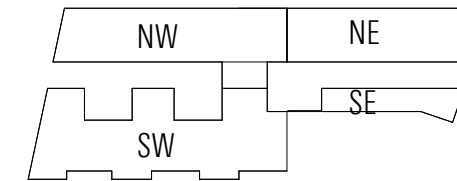
ECKINGTON YARDS | EAST + WEST  
1611-1625 ECKINGTON PLACE + 1500 HARRY THOMAS WAY, NE WASHINGTON DC 20002

BOUNDARY COMPANIES + J B G  
4445 WILLARD AVENUE, SUITE 400 BETHESDA MD 20815

ERIC COLBERT & ASSOCIATES, P.C.  
717 5TH STREET, NW WASHINGTON, DC 20001



ECKINGTON YARDS EAST | PERSPECTIVE @ 20' PUBLIC ALLEY



20' PUBLIC ALLEY  
BETWEEN NE BLDG AND  
R STREET CONDOS

ECKINGTON  
YARDS SW  
BLDG

ECKINGTON  
YARDS NW  
BLDG

CUBE SMART

McKINLEY  
TECH

GALE

NoMa GREEN

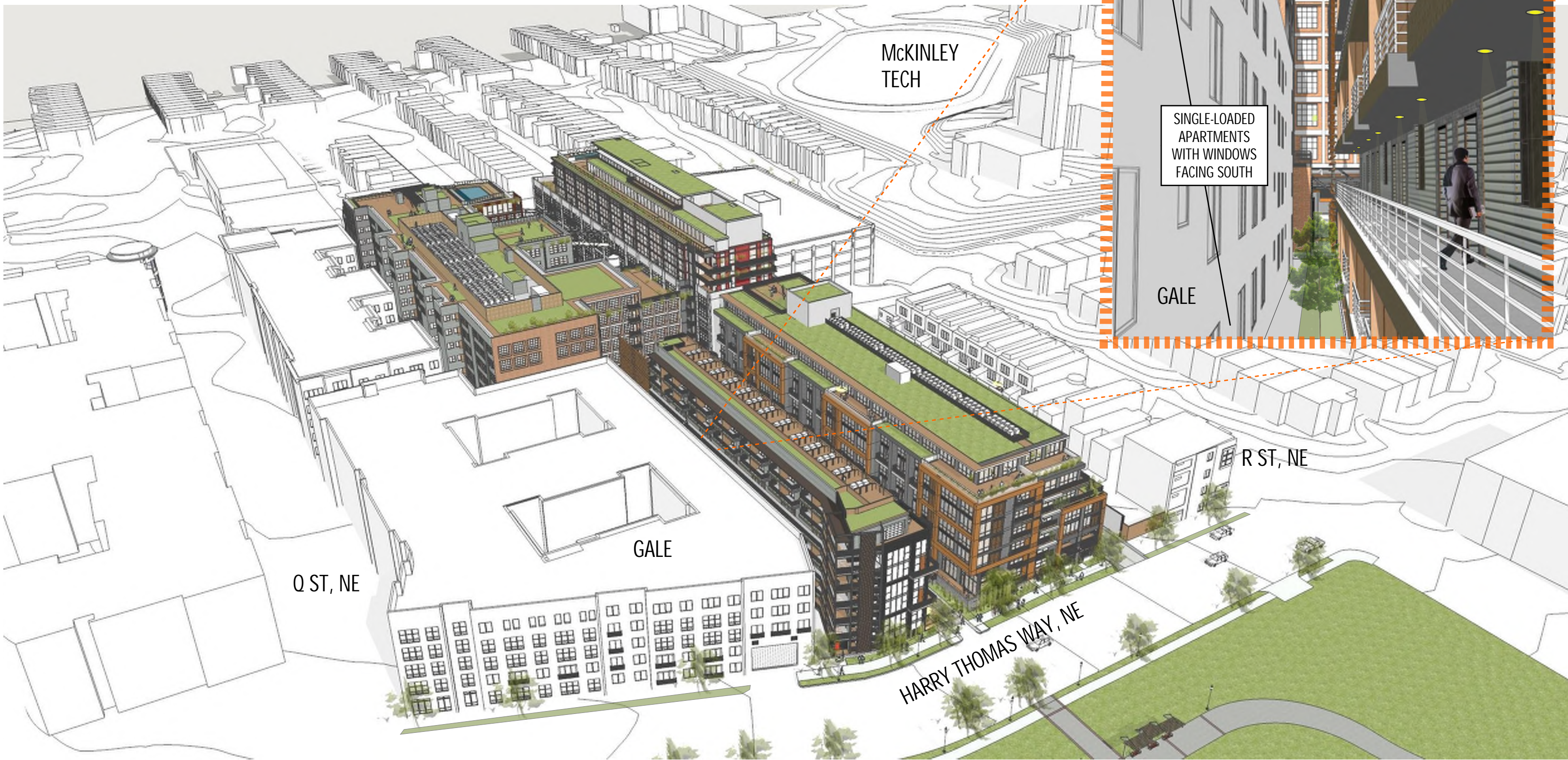
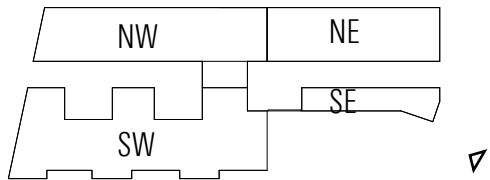
ECKINGTON  
YARDS  
SE BLDG

ECKINGTON  
YARDS  
NE BLDG

R ST, NE

HARRY THOMAS WAY, NE

# ECKINGTON YARDS EAST | MASSING VIEWS @ NEIGHBORING BUILDING (R STREET CONDOS)



McKINLEY  
TECH

SINGLE-LOADED  
APARTMENTS  
WITH WINDOWS  
FACING SOUTH

GALE

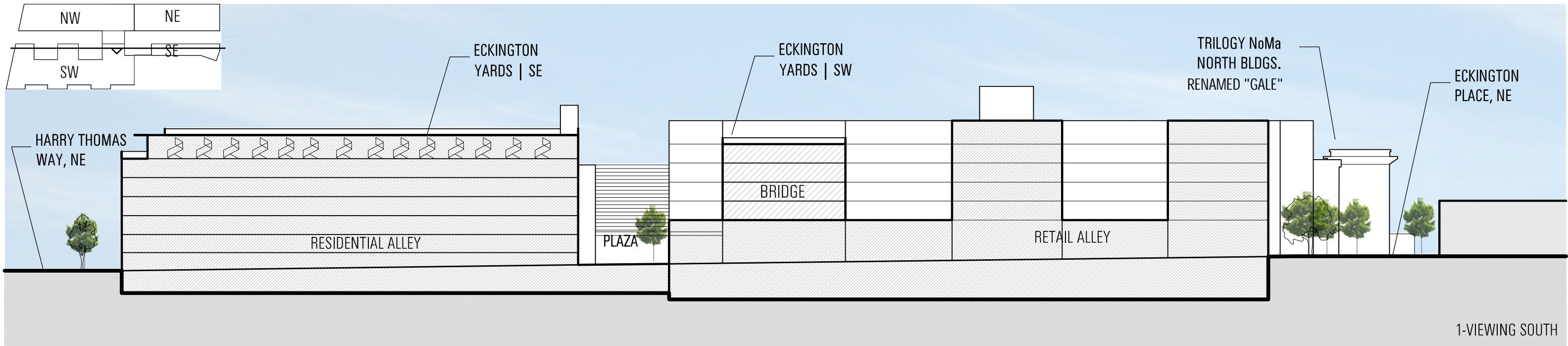
Q ST, NE

GALE

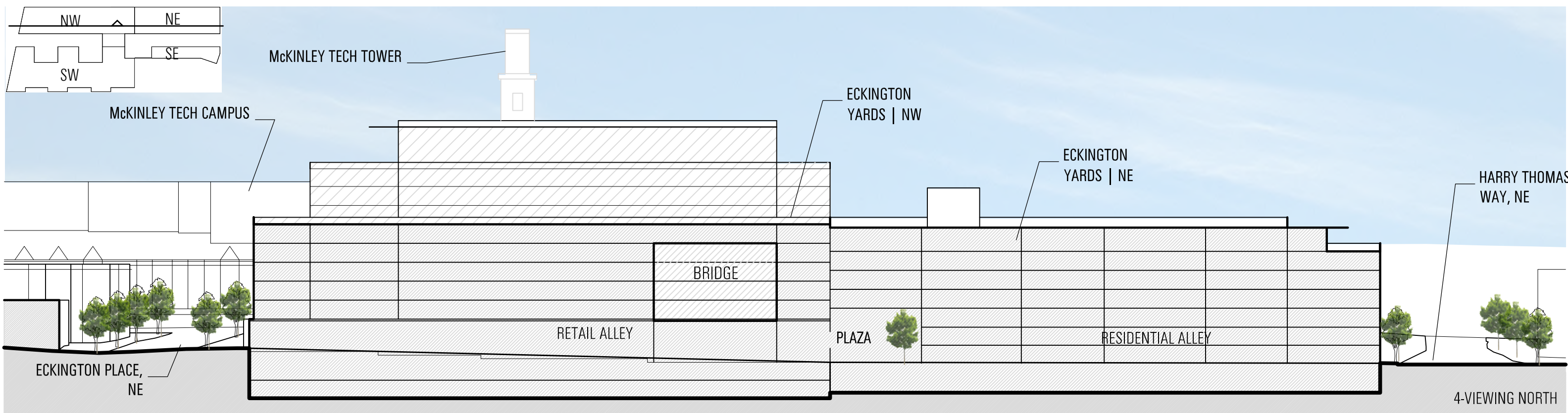
R ST, NE

HARRY THOMAS WAY, NE

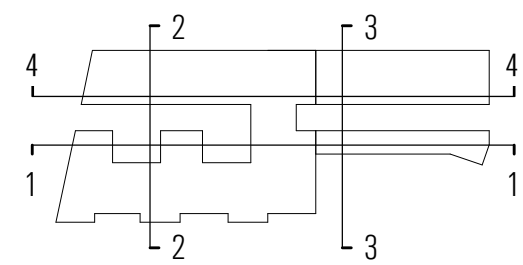
ECKINGTON YARDS EAST | MASSING VIEWS @ NEIGHBORING BUILDING (GALE APARTMENTS)



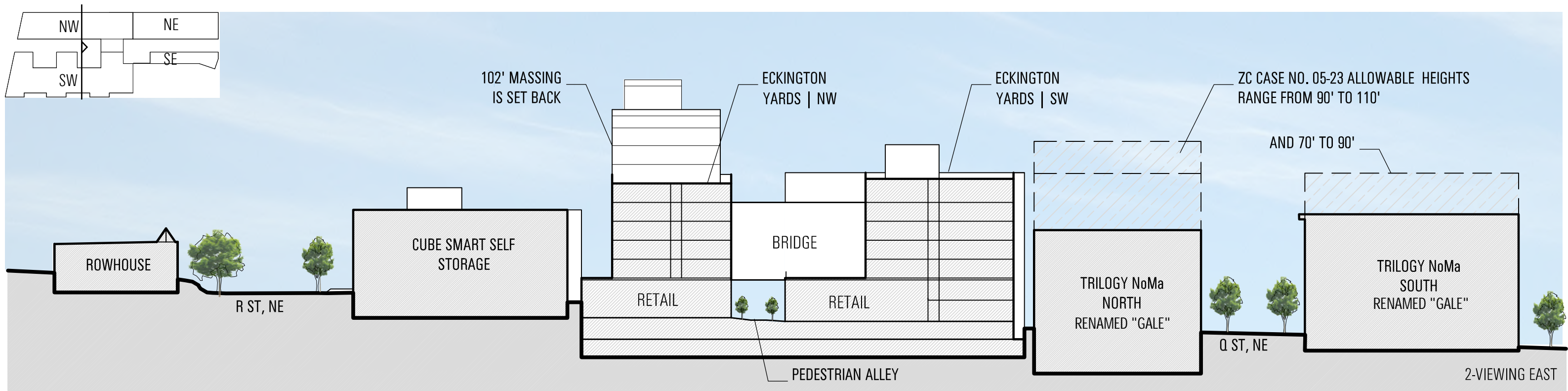
1 - SITE SECTION VIEWING SOUTH



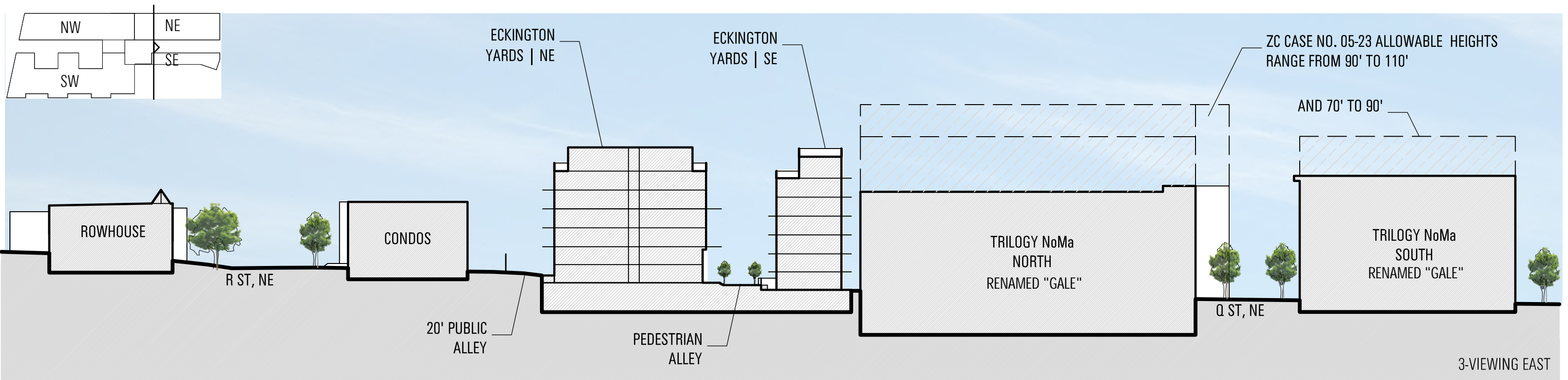
4 - SITE SECTION VIEWING NORTH



SITE SECTIONS



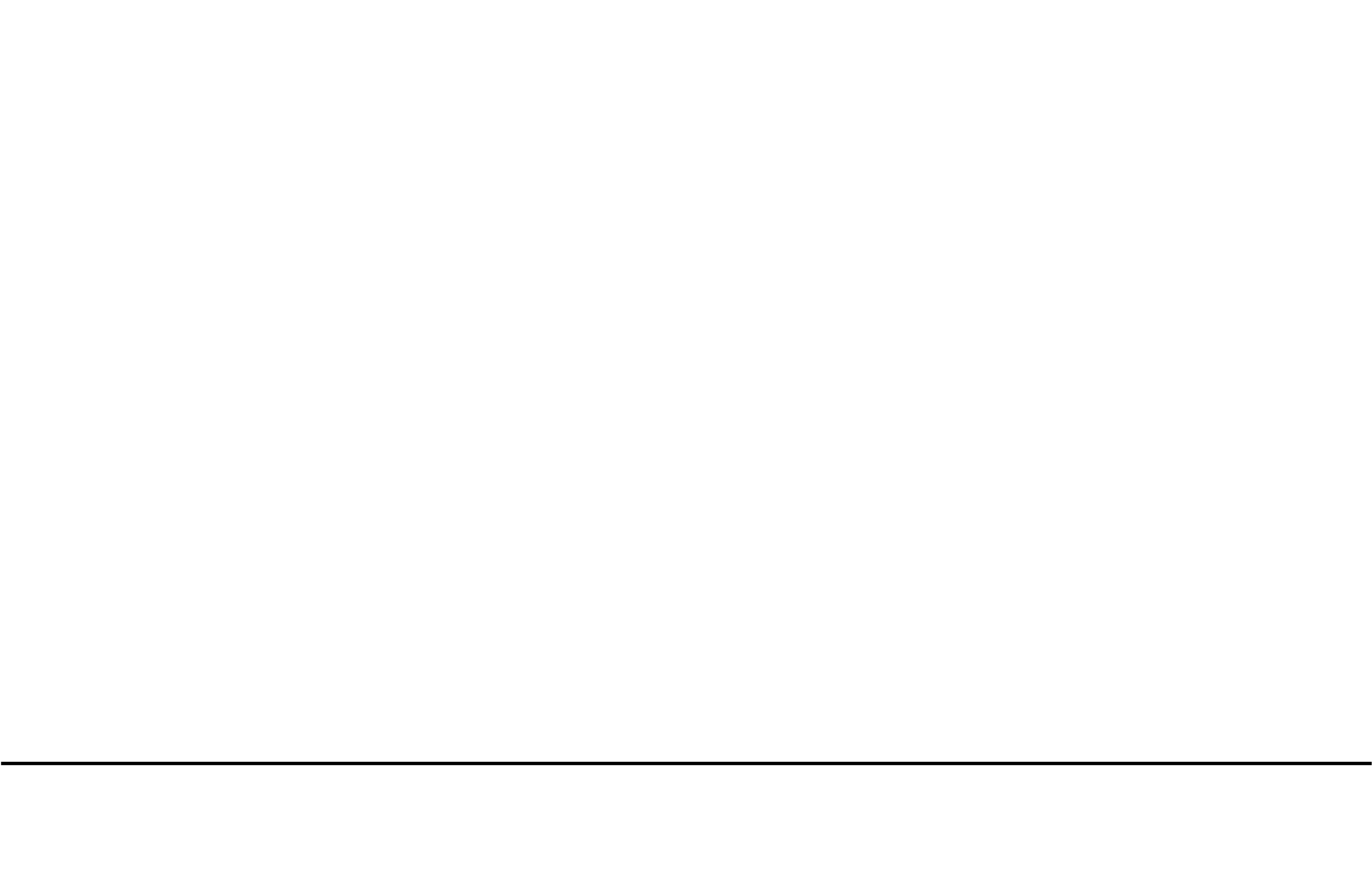
2 - SITE SECTION VIEWING EAST



3 - SITE SECTION VIEWING EAST

SITE SECTIONS



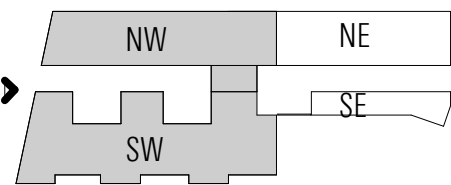






Notes:

1. Refer to floor plans for overall building dimensions.
2. Refer to sections for overall building height.
3. The exterior elevations, including door and window sizes and locations, the interior partition locations, the number, size, and locations of residential units, outdoor space, stairs, balcony and elevators are preliminary and shown for illustrative purposes only. The parking space layout is shown for illustrative purposes only. The final layouts may vary.
4. Retail storefronts and signage are for illustrative purposes only and are subject to tenant modification. Applicant requests the flexibility to vary the final selection of the exterior materials within the color ranges and material types (maintaining the same general level of quality) proposed, based on availability at the time of construction and further project design.

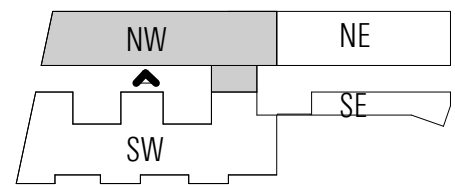


## ECKINGTON PLACE STREET ELEVATION



Notes:

1. Refer to floor plans for overall building dimensions.
2. Refer to sections for overall building height.
3. The exterior elevations, including door and window sizes and locations, the interior partition locations, the number, size, and locations of residential units, outdoor space, stairs, balcony and elevators are preliminary and shown for illustrative purposes only. The parking space layout is shown for illustrative purposes only. The final layouts may vary.
4. Retail storefronts and signage are for illustrative purposes only and are subject to tenant modification. Applicant requests the flexibility to vary the final selection of the exterior materials within the color ranges and material types (maintaining the same general level of quality) proposed, based on availability at the time of construction and further project design.



NW | SOUTH ELEVATION

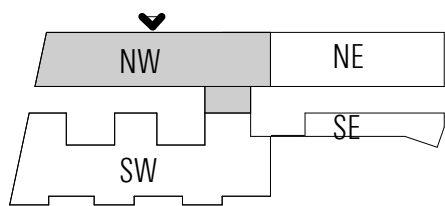
PRE-HEARING SUBMISSION | A3.02

02 / 05 / 2016



Notes:

1. Refer to floor plans for overall building dimensions.
2. Refer to sections for overall building height.
3. The exterior elevations, including door and window sizes and locations, the interior partition locations, the number, size, and locations of residential units, outdoor space, stairs, balcony and elevators are preliminary and shown for illustrative purposes only. The parking space layout is shown for illustrative purposes only. The final layouts may vary.
4. Retail storefronts and signage are for illustrative purposes only and are subject to tenant modification. Applicant requests the flexibility to vary the final selection of the exterior materials within the color ranges and material types (maintaining the same general level of quality) proposed, based on availability at the time of construction and further project design.

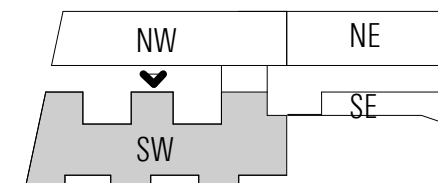


NW | NORTH ELEVATION



Notes:

1. Refer to floor plans for overall building dimensions.
2. Refer to sections for overall building height.
3. The exterior elevations, including door and window sizes and locations, the interior partition locations, the number, size, and locations of residential units, outdoor space, stairs, balcony and elevators are preliminary and shown for illustrative purposes only. The parking space layout is shown for illustrative purposes only. The final layouts may vary.
4. Retail storefronts and signage are for illustrative purposes only and are subject to tenant modification. Applicant requests the flexibility to vary the final selection of the exterior materials within the color ranges and material types (maintaining the same general level of quality) proposed, based on availability at the time of construction and further project design.



SW | NORTH ELEVATION

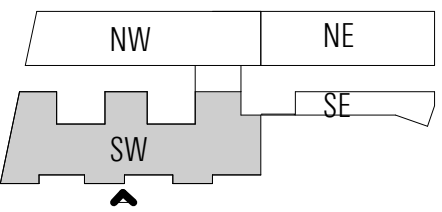
PRE-HEARING SUBMISSION | A3.04

02 / 05 / 2016



Notes:

1. Refer to floor plans for overall building dimensions.
2. Refer to sections for overall building height.
3. The exterior elevations, including door and window sizes and locations, the interior partition locations, the number, size, and locations of residential units, outdoor space, stairs, balcony and elevators are preliminary and shown for illustrative purposes only. The parking space layout is shown for illustrative purposes only. The final layouts may vary.
4. Retail storefronts and signage are for illustrative purposes only and are subject to tenant modification. Applicant requests the flexibility to vary the final selection of the exterior materials within the color ranges and material types (maintaining the same general level of quality) proposed, based on availability at the time of construction and further project design.

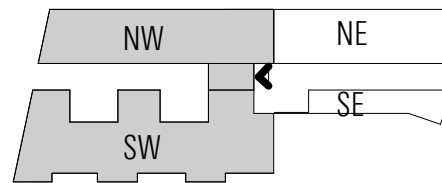


SW | SOUTH ELEVATION



Notes:

1. Refer to floor plans for overall building dimensions.
2. Refer to sections for overall building height.
3. The exterior elevations, including door and window sizes and locations, the interior partition locations, the number, size, and locations of residential units, outdoor space, stairs, balcony and elevators are preliminary and shown for illustrative purposes only. The parking space layout is shown for illustrative purposes only. The final layouts may vary.
4. Retail storefronts and signage are for illustrative purposes only and are subject to tenant modification. Applicant requests the flexibility to vary the final selection of the exterior materials within the color ranges and material types (maintaining the same general level of quality) proposed, based on availability at the time of construction and further project design.



NW + SW | EAST ELEVATION

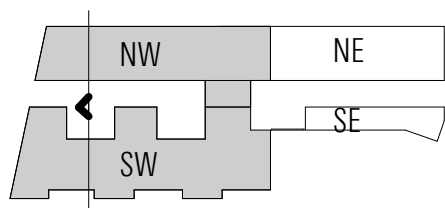
PRE-HEARING SUBMISSION | A3.06



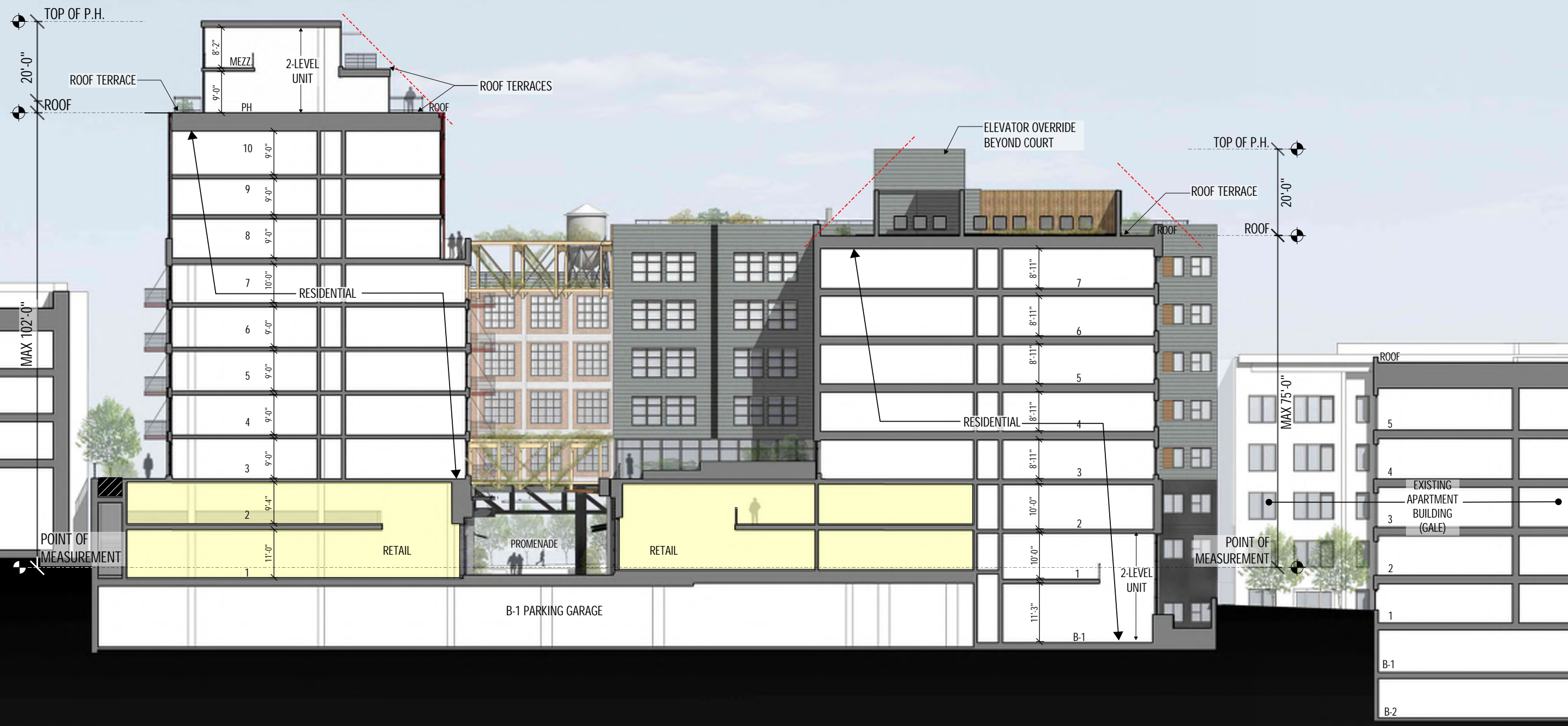


Notes:

1. Refer to floor plans for overall building dimensions.
2. Refer to sections for overall building height.
3. The exterior elevations, including door and window sizes and locations, the interior partition locations, the number, size, and locations of residential units, outdoor space, stairs, balcony and elevators are preliminary and shown for illustrative purposes only. The parking space layout is shown for illustrative purposes only. The final layouts may vary.
4. Retail storefronts and signage are for illustrative purposes only and are subject to tenant modification. Applicant requests the flexibility to vary the final selection of the exterior materials within the color ranges and material types (maintaining the same general level of quality) proposed, based on availability at the time of construction and further project design.

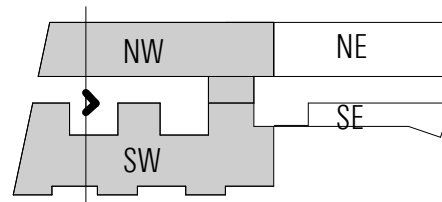


NW + SW | SECTION FACING WEST

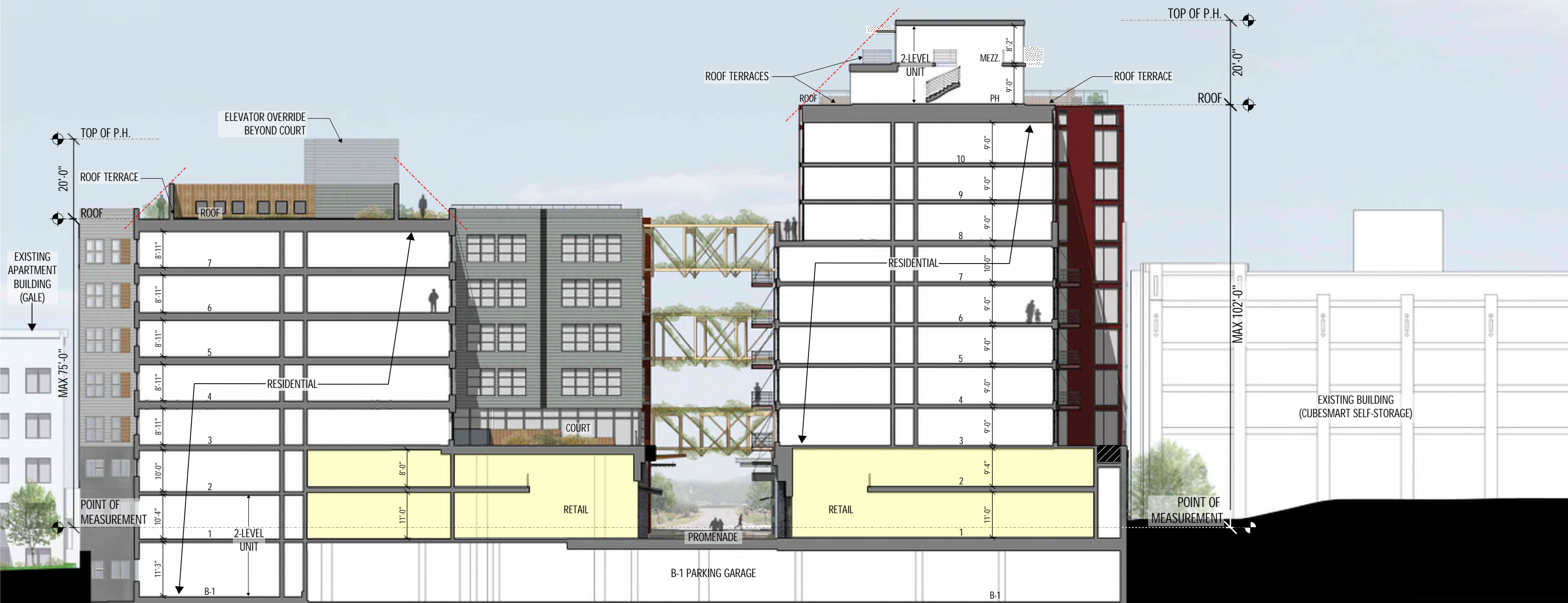


Notes:

1. Refer to floor plans for overall building dimensions.
2. Refer to sections for overall building height.
3. The exterior elevations, including door and window sizes and locations, the interior partition locations, the number, size, and locations of residential units, outdoor space, stairs, balcony and elevators are preliminary and shown for illustrative purposes only. The parking space layout is shown for illustrative purposes only. The final layouts may vary.
4. Retail storefronts and signage are for illustrative purposes only and are subject to tenant modification. Applicant requests the flexibility to vary the final selection of the exterior materials within the color ranges and material types (maintaining the same general level of quality) proposed, based on availability at the time of construction and further project design.

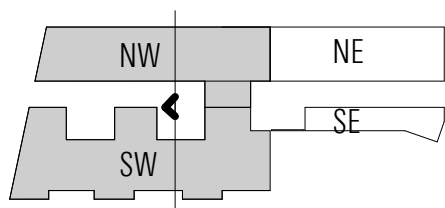


NW + SW | SECTION FACING EAST

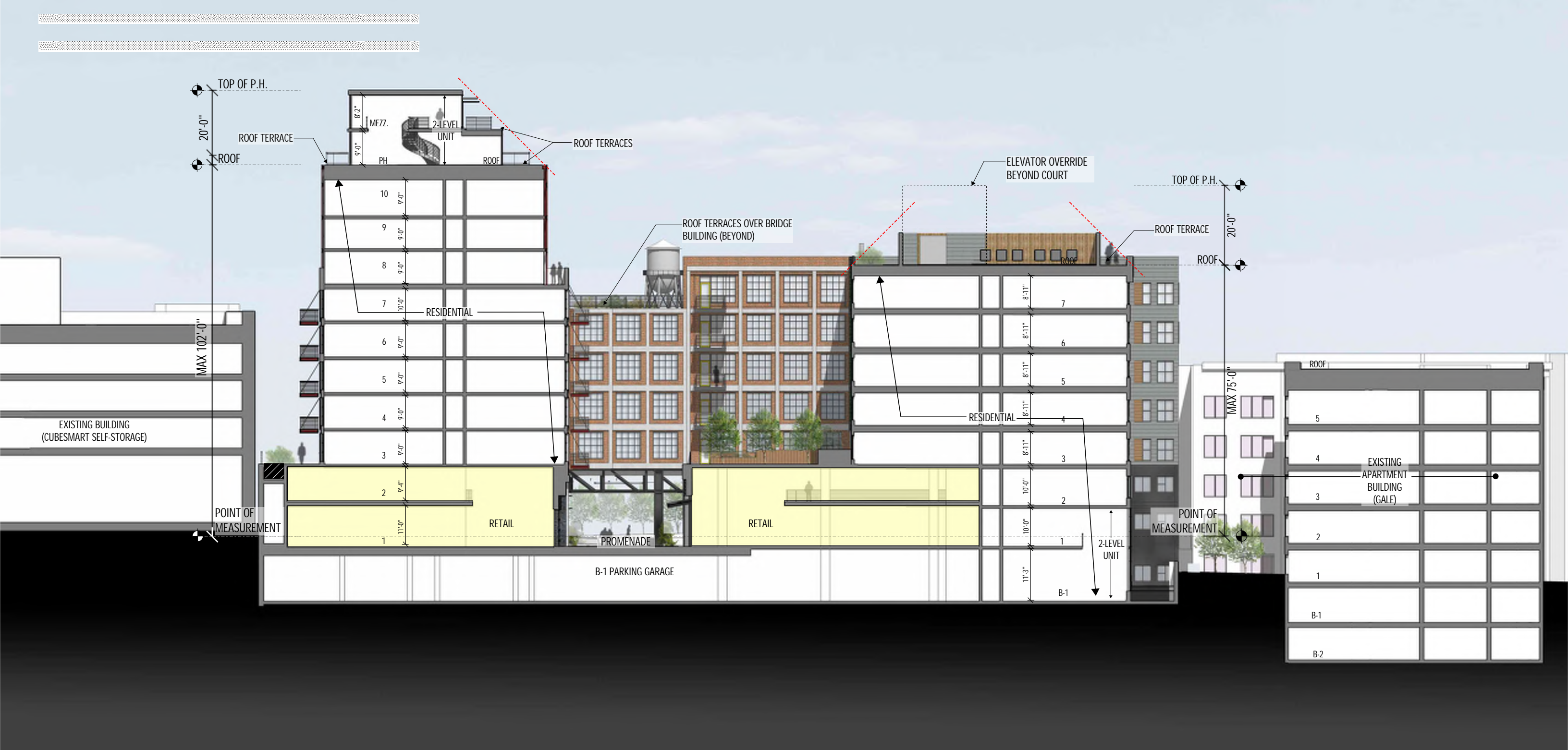


Notes:

1. Refer to floor plans for overall building dimensions.
2. Refer to sections for overall building height.
3. The exterior elevations, including door and window sizes and locations, the interior partition locations, the number, size, and locations of residential units, outdoor space, stairs, balcony and elevators are preliminary and shown for illustrative purposes only. The parking space layout is shown for illustrative purposes only. The final layouts may vary.
4. Retail storefronts and signage are for illustrative purposes only and are subject to tenant modification. Applicant requests the flexibility to vary the final selection of the exterior materials within the color ranges and material types (maintaining the same general level of quality) proposed, based on availability at the time of construction and further project design.

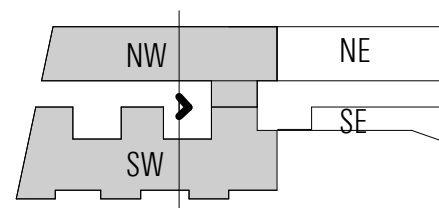


NW + SW | SECTION FACING WEST



Notes:

1. Refer to floor plans for overall building dimensions.
2. Refer to sections for overall building height.
3. The exterior elevations, including door and window sizes and locations, the interior partition locations, the number, size, and locations of residential units, outdoor space, stairs, balcony and elevators are preliminary and shown for illustrative purposes only. The parking space layout is shown for illustrative purposes only. The final layouts may vary.
4. Retail storefronts and signage are for illustrative purposes only and are subject to tenant modification. Applicant requests the flexibility to vary the final selection of the exterior materials within the color ranges and material types (maintaining the same general level of quality) proposed, based on availability at the time of construction and further project design.

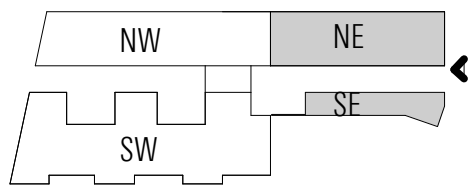


NW + SW | SECTION FACING EAST



Notes:

1. Refer to floor plans for overall building dimensions.
2. Refer to sections for overall building height.
3. The exterior elevations, including door and window sizes and locations, the interior partition locations, the number, size, and locations of residential units, outdoor space, stairs, balcony and elevators are preliminary and shown for illustrative purposes only. The parking space layout is shown for illustrative purposes only. The final layouts may vary.
4. Retail storefronts and signage are for illustrative purposes only and are subject to tenant modification. Applicant requests the flexibility to vary the final selection of the exterior materials within the color ranges and material types (maintaining the same general level of quality) proposed, based on availability at the time of construction and further project design.

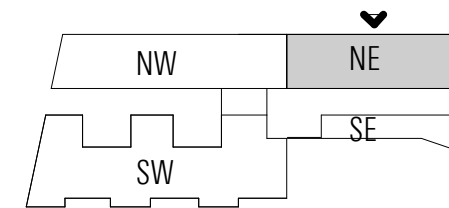


## HARRY THOMAS WAY STREET ELEVATION



Notes:

1. Refer to floor plans for overall building dimensions.
2. Refer to sections for overall building height.
3. The exterior elevations, including door and window sizes and locations, the interior partition locations, the number, size, and locations of residential units, outdoor space, stairs, balcony and elevators are preliminary and shown for illustrative purposes only. The parking space layout is shown for illustrative purposes only. The final layouts may vary.
4. Retail storefronts and signage are for illustrative purposes only and are subject to tenant modification. Applicant requests the flexibility to vary the final selection of the exterior materials within the color ranges and material types (maintaining the same general level of quality) proposed, based on availability at the time of construction and further project design.



NE | NORTH ELEVATION

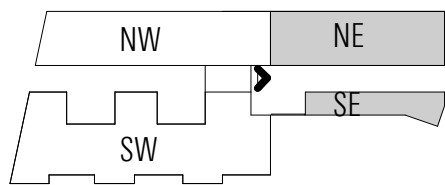
PRE-HEARING SUBMISSION | A3.12

02 / 05 / 2016



Notes:

1. Refer to floor plans for overall building dimensions.
2. Refer to sections for overall building height.
3. The exterior elevations, including door and window sizes and locations, the interior partition locations, the number, size, and locations of residential units, outdoor space, stairs, balcony and elevators are preliminary and shown for illustrative purposes only. The parking space layout is shown for illustrative purposes only. The final layouts may vary.
4. Retail storefronts and signage are for illustrative purposes only and are subject to tenant modification. Applicant requests the flexibility to vary the final selection of the exterior materials within the color ranges and material types (maintaining the same general level of quality) proposed, based on availability at the time of construction and further project design.

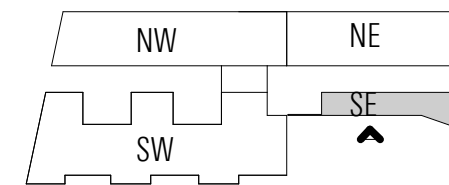


NE + SE | WEST ELEVATION



Notes:

1. Refer to floor plans for overall building dimensions.
2. Refer to sections for overall building height.
3. The exterior elevations, including door and window sizes and locations, the interior partition locations, the number, size, and locations of residential units, outdoor space, stairs, balcony and elevators are preliminary and shown for illustrative purposes only. The parking space layout is shown for illustrative purposes only. The final layouts may vary.
4. Retail storefronts and signage are for illustrative purposes only and are subject to tenant modification. Applicant requests the flexibility to vary the final selection of the exterior materials within the color ranges and material types (maintaining the same general level of quality) proposed, based on availability at the time of construction and further project design.



SE | SOUTH ELEVATION

PRE-HEARING SUBMISSION | A3.14

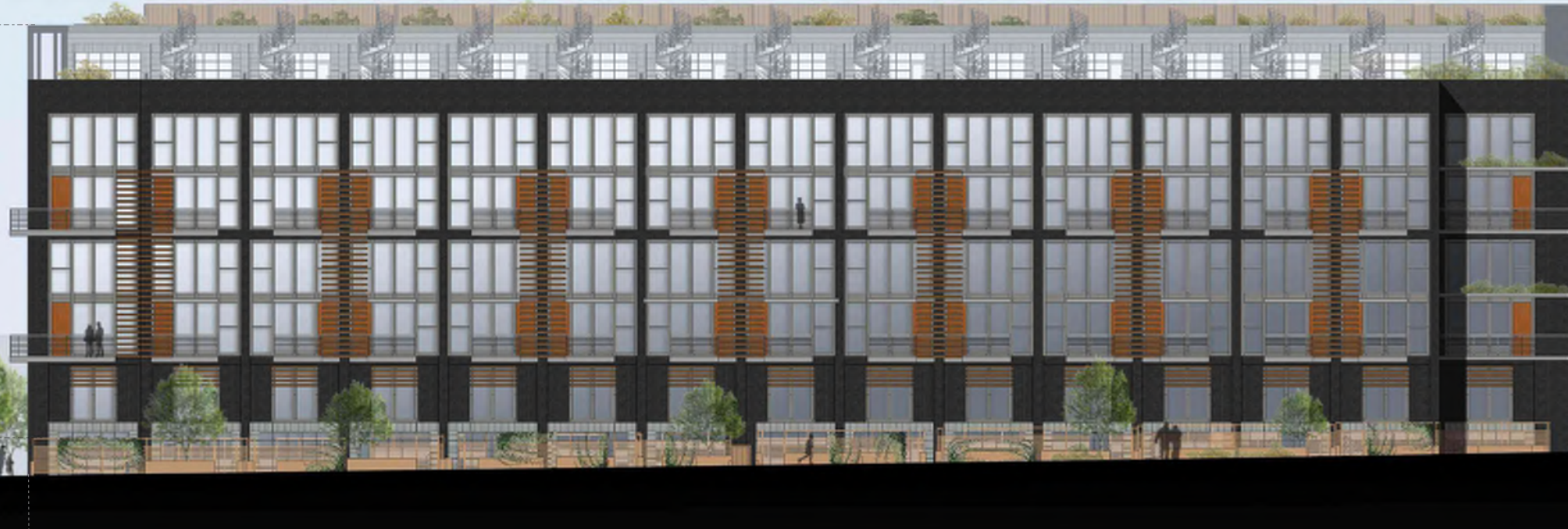
02 / 05 / 2016



ROOF

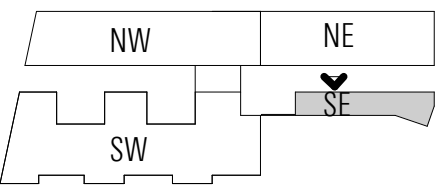
MAX 75'-0"

POINT OF MEASUREMENT



Notes:

1. Refer to floor plans for overall building dimensions.
2. Refer to sections for overall building height.
3. The exterior elevations, including door and window sizes and locations, the interior partition locations, the number, size, and locations of residential units, outdoor space, stairs, balcony and elevators are preliminary and shown for illustrative purposes only. The parking space layout is shown for illustrative purposes only. The final layouts may vary.
4. Retail storefronts and signage are for illustrative purposes only and are subject to tenant modification. Applicant requests the flexibility to vary the final selection of the exterior materials within the color ranges and material types (maintaining the same general level of quality) proposed, based on availability at the time of construction and further project design.

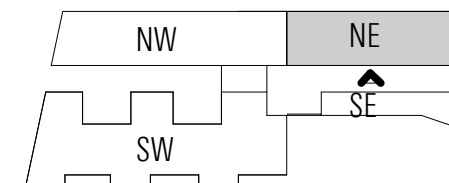


SE | NORTH ELEVATION (PROMENADE)



Notes:

1. Refer to floor plans for overall building dimensions.
2. Refer to sections for overall building height.
3. The exterior elevations, including door and window sizes and locations, the interior partition locations, the number, size, and locations of residential units, outdoor space, stairs, balcony and elevators are preliminary and shown for illustrative purposes only. The parking space layout is shown for illustrative purposes only. The final layouts may vary.
4. Retail storefronts and signage are for illustrative purposes only and are subject to tenant modification. Applicant requests the flexibility to vary the final selection of the exterior materials within the color ranges and material types (maintaining the same general level of quality) proposed, based on availability at the time of construction and further project design.

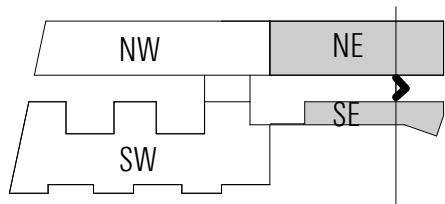


NE | SOUTH ELEVATION (PROMENADE)



Notes:

1. Refer to floor plans for overall building dimensions.
2. Refer to sections for overall building height.
3. The exterior elevations, including door and window sizes and locations, the interior partition locations, the number, size, and locations of residential units, outdoor space, stairs, balcony and elevators are preliminary and shown for illustrative purposes only. The parking space layout is shown for illustrative purposes only. The final layouts may vary.
4. Retail storefronts and signage are for illustrative purposes only and are subject to tenant modification. Applicant requests the flexibility to vary the final selection of the exterior materials within the color ranges and material types (maintaining the same general level of quality) proposed, based on availability at the time of construction and further project design.

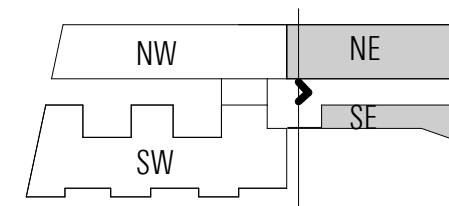


NE + SE | SECTION FACING EAST



Notes:

1. Refer to floor plans for overall building dimensions.
2. Refer to sections for overall building height.
3. The exterior elevations, including door and window sizes and locations, the interior partition locations, the number, size, and locations of residential units, outdoor space, stairs, balcony and elevators are preliminary and shown for illustrative purposes only. The parking space layout is shown for illustrative purposes only. The final layouts may vary.
4. Retail storefronts and signage are for illustrative purposes only and are subject to tenant modification. Applicant requests the flexibility to vary the final selection of the exterior materials within the color ranges and material types (maintaining the same general level of quality) proposed, based on availability at the time of construction and further project design.



NE + SE | SECTION FACING EAST